

DEPARTMENT OF  
**ARCHITECTURE**

2023-2024 ACADEMIC YEAR  
STUDENT PROJECTS



FACULTY OF  
ARCHITECTURE  
AND DESIGN

FACULTY OF ARCHITECTURE AND DESIGN  
DEPARTMENT OF ARCHITECTURE  
**STUDENT PROJECTS | 2023-2024 ACADEMIC YEAR**

## **DEPARTMENT OF ARCHITECTURE**

### Vision of the Department

To be a pioneering department that raises professionals who constantly develop in terms of education, scientific research, and contribution to society, with high international recognition in the field of Architecture and sensitivity towards environmental problems and the city.

### Mission of the Department

Bahçeşehir University Faculty of Architecture and Design, Department of Architecture aims to use the potentials of being in the center of Istanbul to do the following; to support formal education with extra-curricular education opportunities, an innovative education approach, and use of leading education methods and technologies; to adopt the principle of raising professionals who can engage in interdisciplinary and innovative initiatives and studies via sectoral collaborations while considering sustainable development goals, have critical and creative perspectives, take part in academic and professional studies on a local and global scale with their knowledge and skills, and contribute to the society.

*Prof. Dr. Devrim Isikkaya*  
*BAU Head of the Department of Architecture*

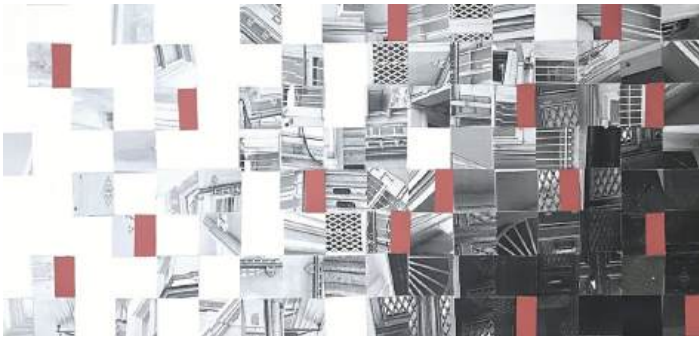
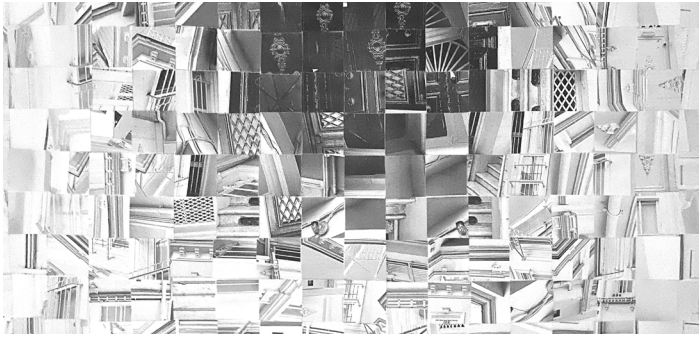
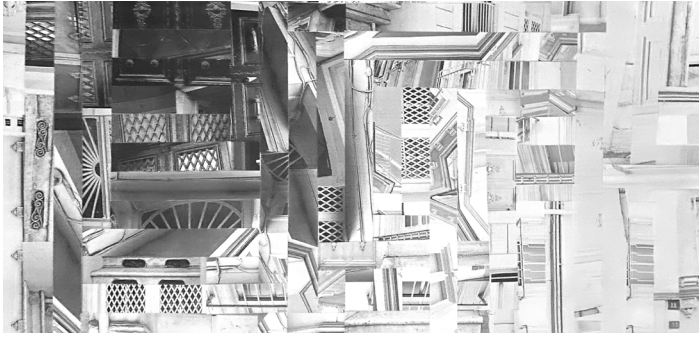
## ACADEMIC STAFF

Prof. Murat DÜNDAR (Dean)  
Prof. Devrim IŞIKKAYA (Department Chair)  
Assoc. Prof. Yiğit YILMAZ (Associate Dean)  
Assist Prof. Sinem KÜLTÜR (Associate Dean)  
Prof. Emine Ümran TOPÇU  
Prof. İrem MARO  
Prof. Meltem VATAN  
Prof. Nilay ÜNSAL GÜLMEZ  
Prof. Sema SOYGENİŞ  
Assist Prof. Aslı VARON  
Assist Prof. Belinda TORUS  
Assist Prof. Berna YAYLALI  
Assist Prof. Dürnev ATILGAN YAĞAN  
Assist Prof. Göksun AKYÜREK ALTÜRK  
Assist Prof. Maan CHIBLI  
Assist Prof. Melek Elif SOMER  
Assist Prof. Mine DİNÇER  
Assist. Prof. Neslihan AYDIN YÖNET  
Assist Prof. Pınar ŞAHİN  
Assist Prof. Serengül SEÇMEN  
Assist Prof. Zeynep Gül SÖHMEN TUNAY  
Instructor Nazlı DÖNGEZ  
Teaching Assist. Ayşe Eda ADIGÜZEL  
Teaching Assist. Büşra ATAM  
Teaching Assist. Canay TUNÇER  
Teaching Assist. İhsan Sefa ÖZER



# ARC 1001

Basic Design



### **Abbasaga Variations | Elif Ilhan**

This project focuses on the abstraction of architectural features of residential buildings in Abbasaga, near the North Campus. Focusing on architectural elements such as materials, textures, proportions, and details, project aims to create collages that employ basic design principles like continuity, harmony, rhythm etc.

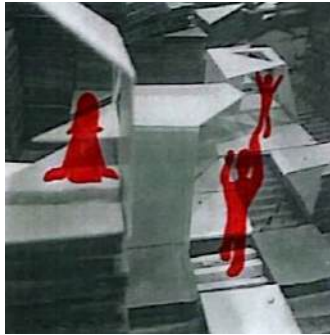
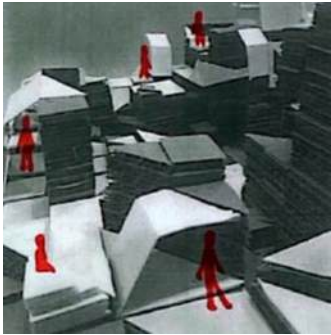
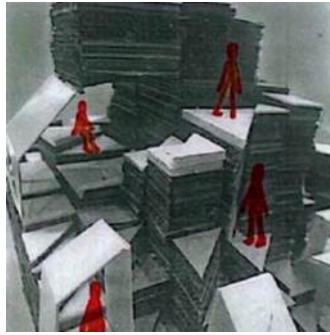
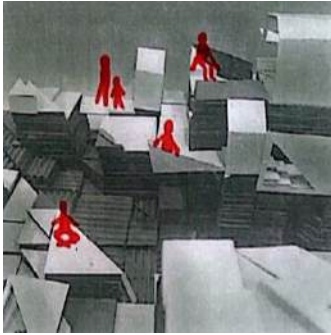
## Confusion of Arrakis |

### Adan Faruja

“Dream of Arrakis” opens with metallic screeches and bell-like tones, building to deep drums and explosive highs. The song evokes mystery, fear, and tension, with dense, unsettling notes and shifting tones suggesting approaching danger. The project translates these emotions through layers of “unorganized mesh, square mesh, and threads,” capturing the song’s echo and depth.







### **Folded Canyon | Selin Altuncu**

The project features a promenade with activities like seating, dining, and observation areas. Folded, repetitive elements create harmony, coverings, and semi-lit spaces. Using triangular and square modules, the topography forms a canyon-like landscape, enhancing usability and comfort.



## **Triangular Island |**

### **Eylül Hazar**

The “Triangular Island” project uses a grid system of four shapes to form a topography. Visitors follow a promenade starting at a pier, passing an exhibit area and seating spaces, and ending at a scenic terrace. Each stop offers unique experiences, creating an engaging journey across the island.



# ARC 1002

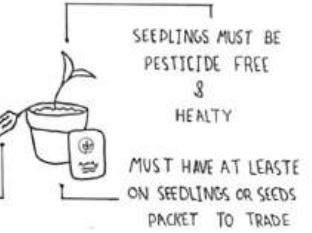
Design Studies

# GROW A GREENER FUTURE

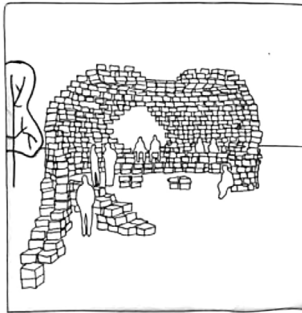
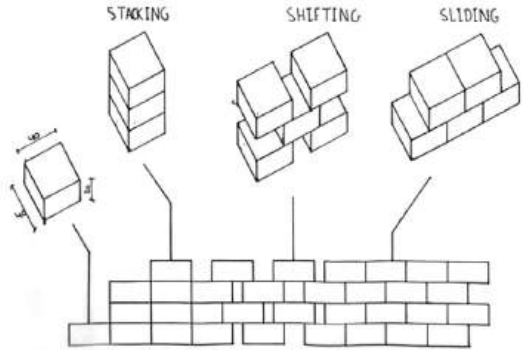
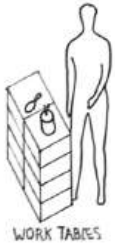
SEEDS & SEEDLING SWAP FOR ADULTS



SEEDS & SEEDLINGS MUST BE LABELED WITH NAME & SOME CARE TIPS



## AGGREGATION

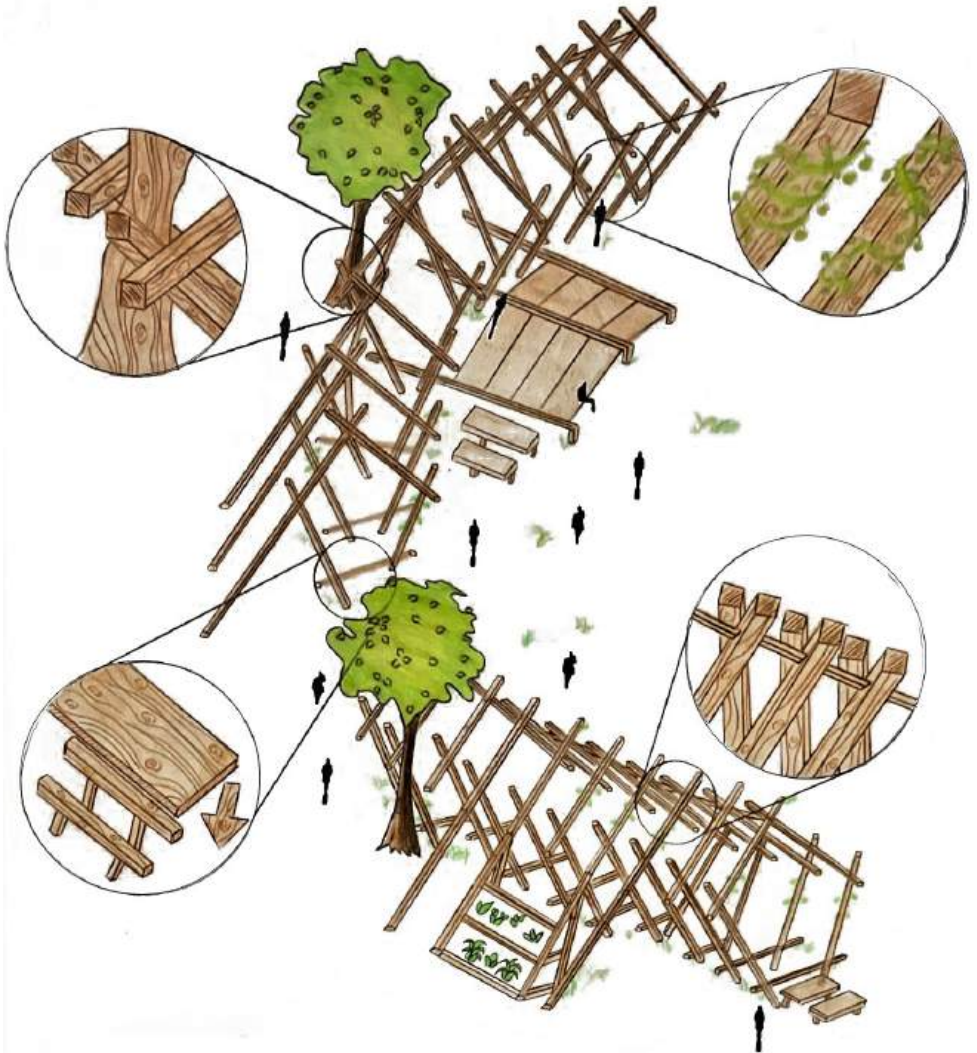


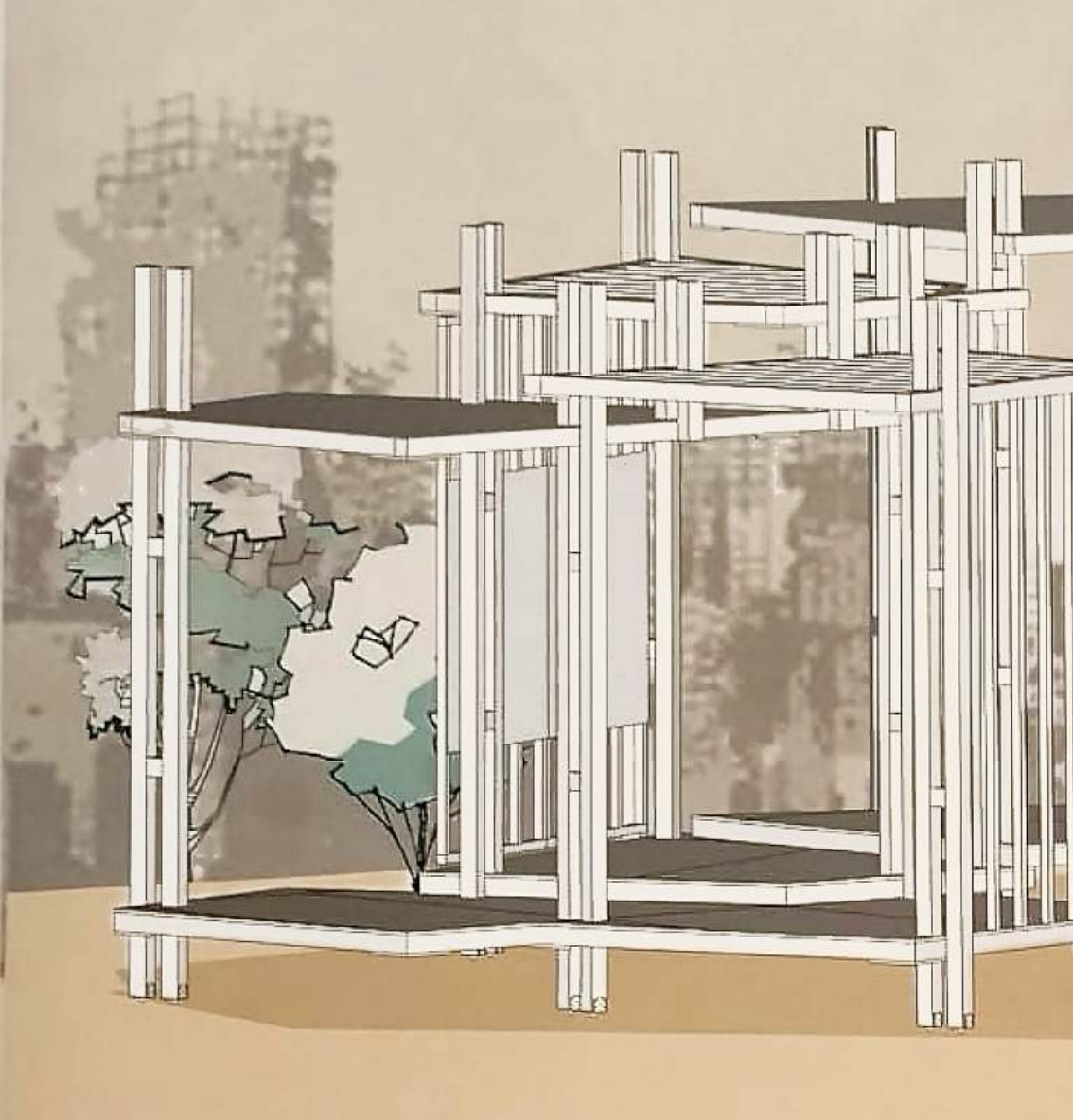
## Blooming Exchange | Ameen Kadaan

A vibrant hub for plant enthusiasts to swap seeds, share gardening knowledge, and explore sustainability. Unified spaces include workshops, cozy seating, swap zones, and gardening beds, fostering connection and learning. The design promotes biodiversity and community in an eco-friendly setting.

## Spine | Moozhan Gholinataj

The Spine is a 70 m<sup>2</sup>, 3 m-high semi-open tunnel-like structure designed to harmonize with its topography. It supports activities like plant swapping and care, with timber extensions for built-in plant pots and storage. Its open design allows plants to grow within the structure while offering views of the surrounding park. The project blends people and nature, creating a space that connects the interior with its environment.





**Arch-Aid |**

**Ameen Kadaan, Bengisu Sakar, Efe Poyraz Ulper**

**Eymen Sen, Irem Sekerci, Madina Baghirli, Rahaf Abuain, Melike Naz  
Suaipoglu, Lara Ezgi Oktay, Ethar Hassan Abdulhameed Hassan Elbeisi**



This initiative establishes a post-disaster communication hub for ages 15-20, addressing their social, emotional, and financial needs. Through skill sharing and community boards, it provides material assistance and open communication, fostering belonging and empowerment.

The hub, made primarily of timber for its sustainability and quick assembly, creates a warm, resilient space for support. Its low carbon footprint ensures environmentally responsible, lasting aid.





# ARC 2001

Architectural Design Studio I



Composting plants



Making compost



People doing pot painting activity



People who have knowledge about agriculture share their knowledge with other people



Collection of grown products



People eating vegetables and fruits grown in the field



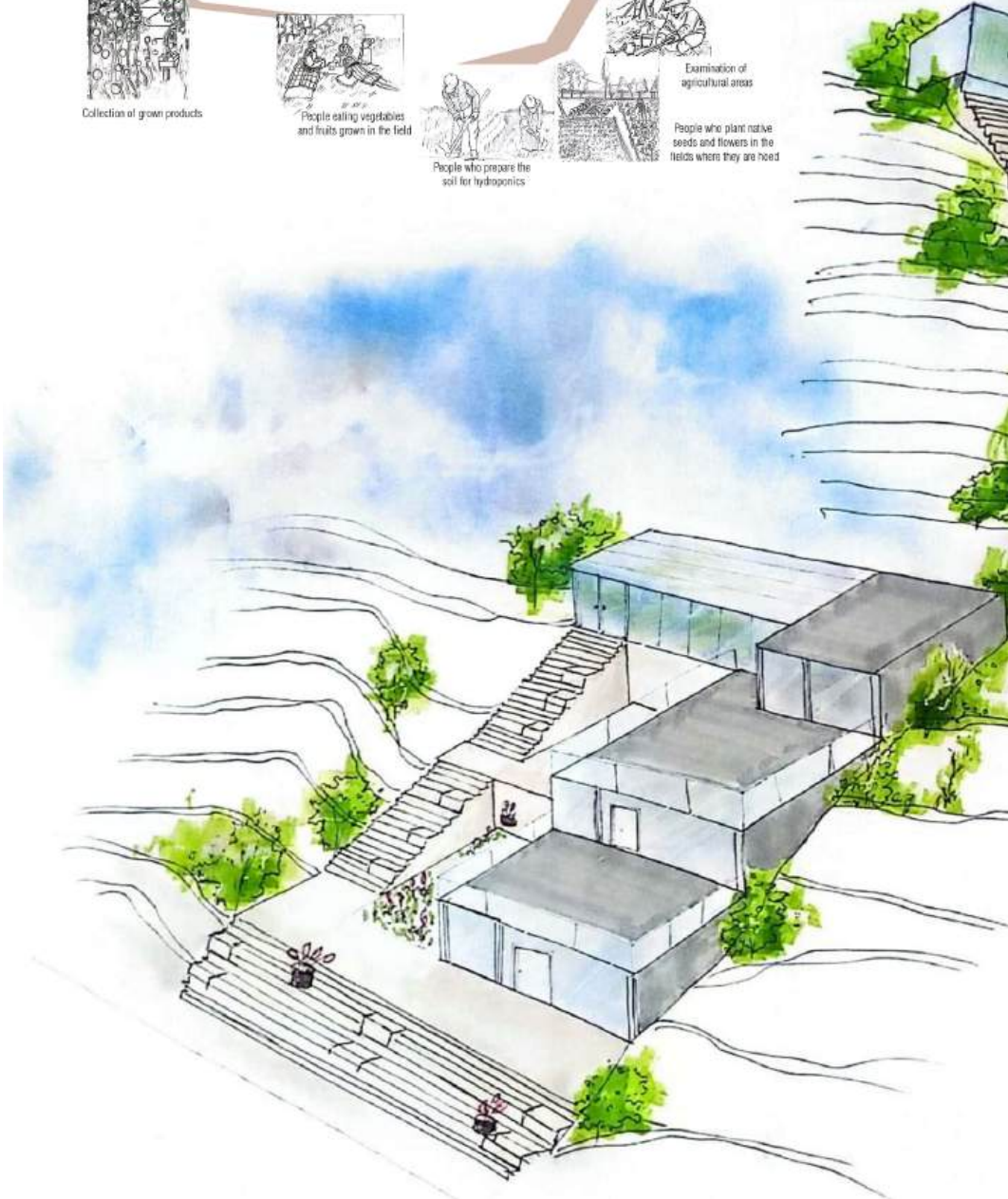
People who prepare the soil for hydroponics



Examination of agricultural areas



People who plant native seeds and flowers in the fields where they are heard





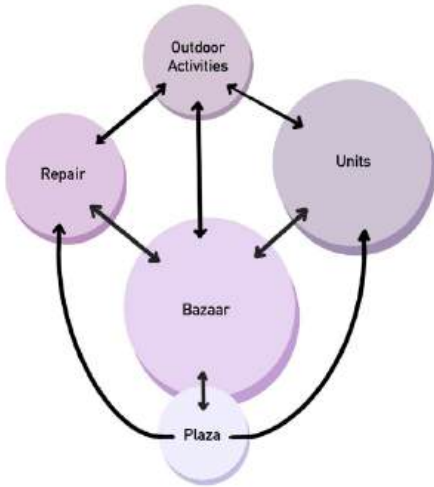
### **Community Garden | Sila Nur Karabatak**

The project envisions a community garden fostering sustainable agriculture and social interaction. It features research spaces, greenhouses, compost areas, and agricultural fields, creating a learning and production hub. By integrating nature with urban life, it promotes environmental awareness and communal engagement.

## Ratio Reuse |

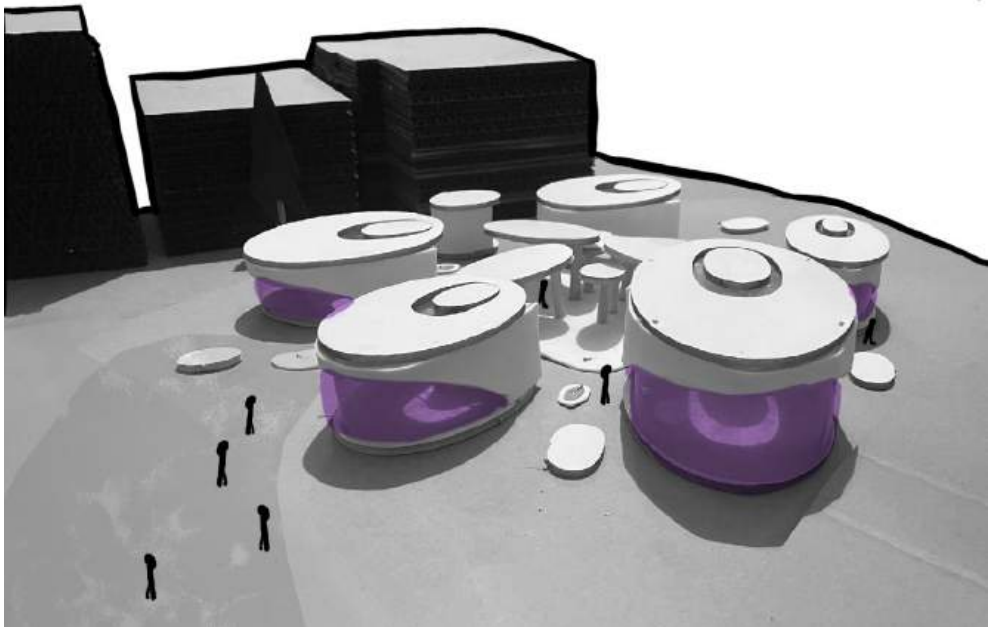
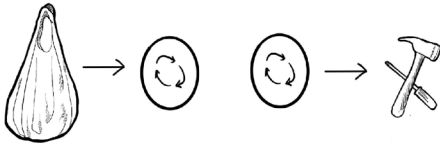
Yasmine Saleh

Because of trash and abandoned items, the peaceful neighbourhood of Cengelkoy struggles to establish a clean and uniting environment along the neighborhood. A centre for material reuse can lower costs, encourage sustainable behaviours, and facilitate participation. The building has four apartments, a repair business, a lavatory and a covered space for gathering places and weekly bazaars.



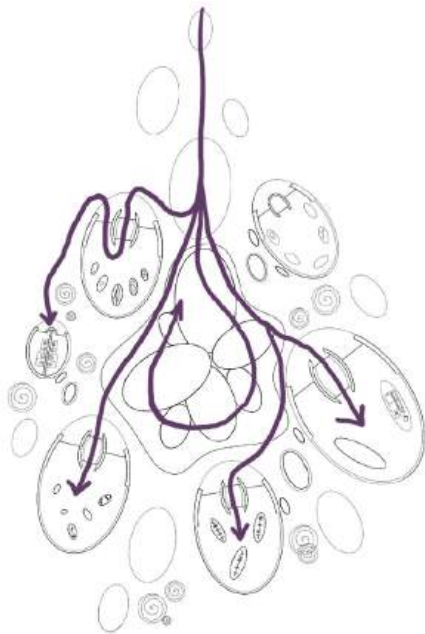
 Donor

 Reciever

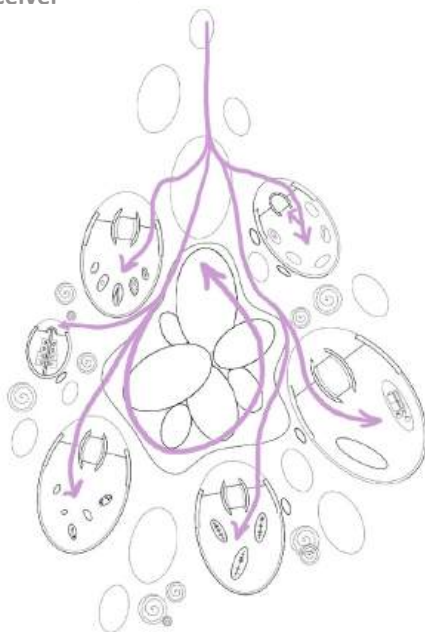






## Circulation Routes

### Donor



### Receiver



-  Furniture according to unit function
-  Roof system with glazing
-  Sub-unit for tagging system for donors
-  Base wall with glazing for natural lighting and enclosure

### Unit Setup





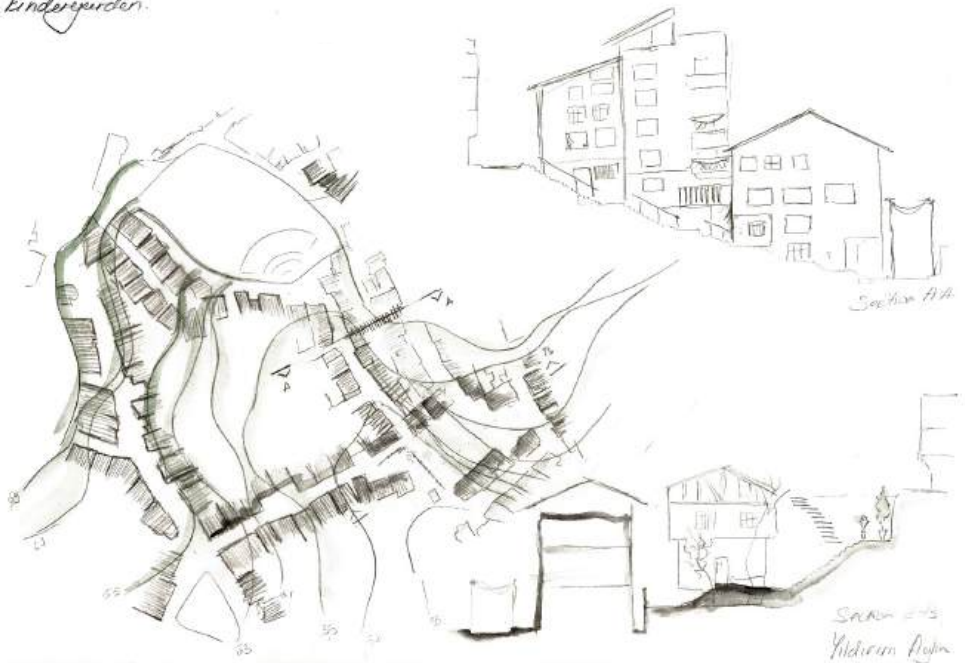
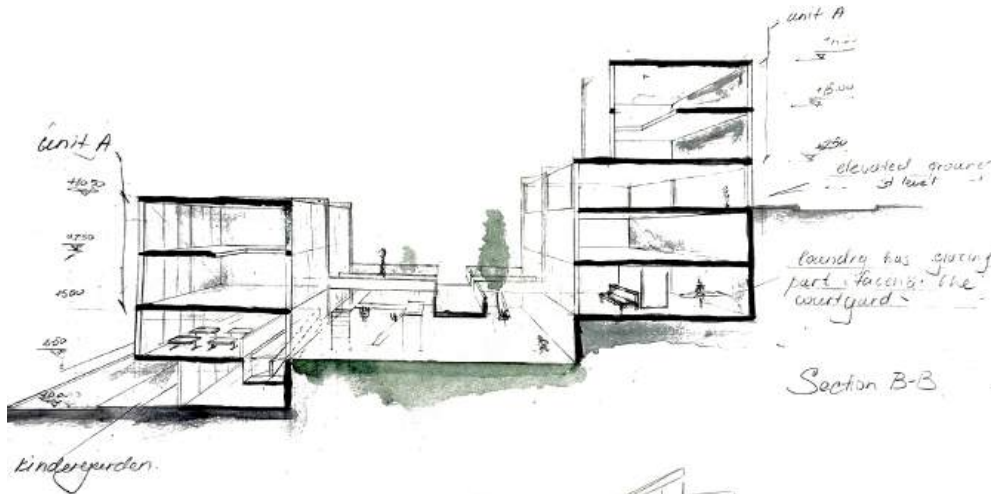
# ARC 2002

Architectural Design Studio II



## Housing Units | Aylin Yıldırım

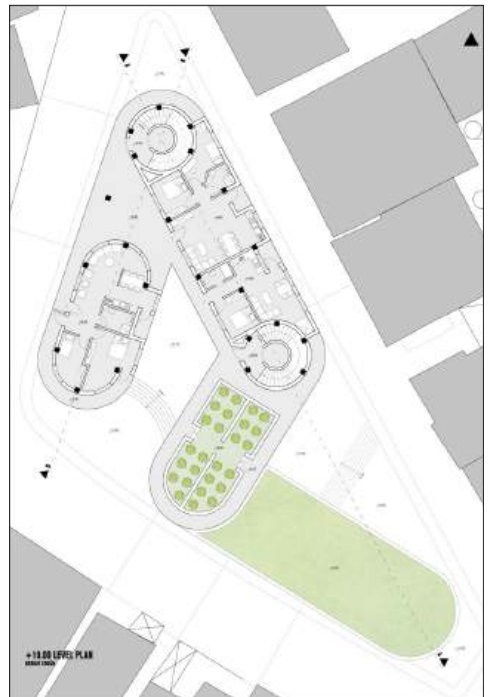
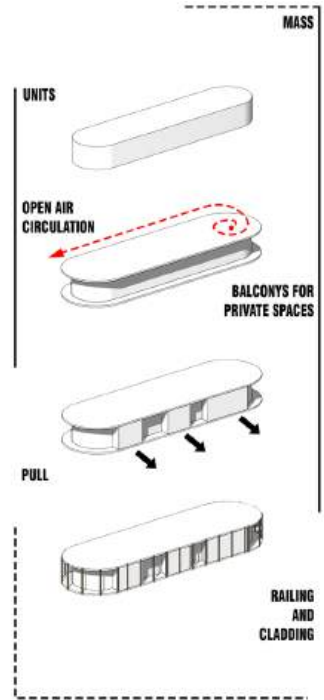
The relationship of housing units create a promenade, which provides different scenarios and emotions for passersby, for example having a view from the bridge on the closed kindergarten playground, or passing through gathering area for neighbourhood. Created places can provide residents with various spaces, like private living units, gathering places for neighbours, common areas for daily activities, or open social spaces.

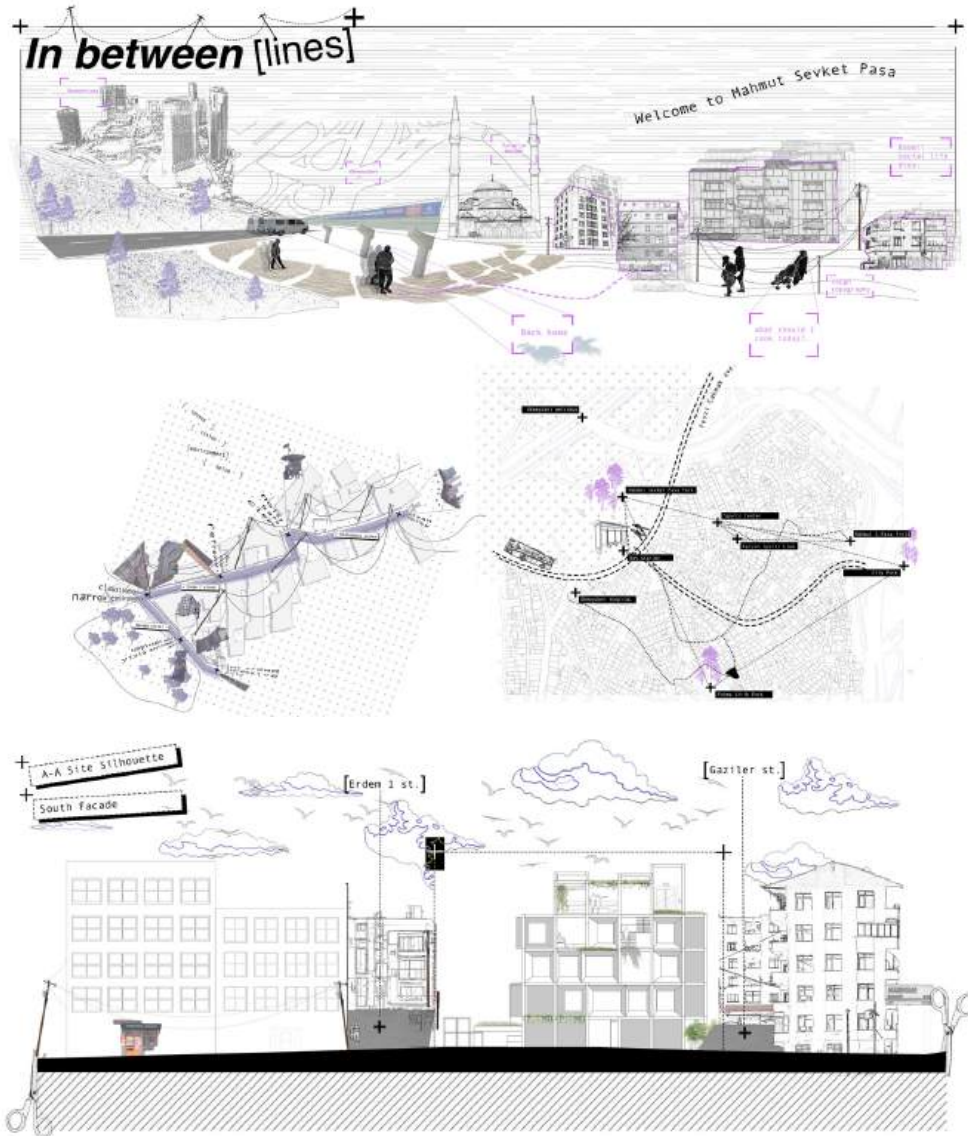


## Shifted Porosity |

### Berkay Ergün

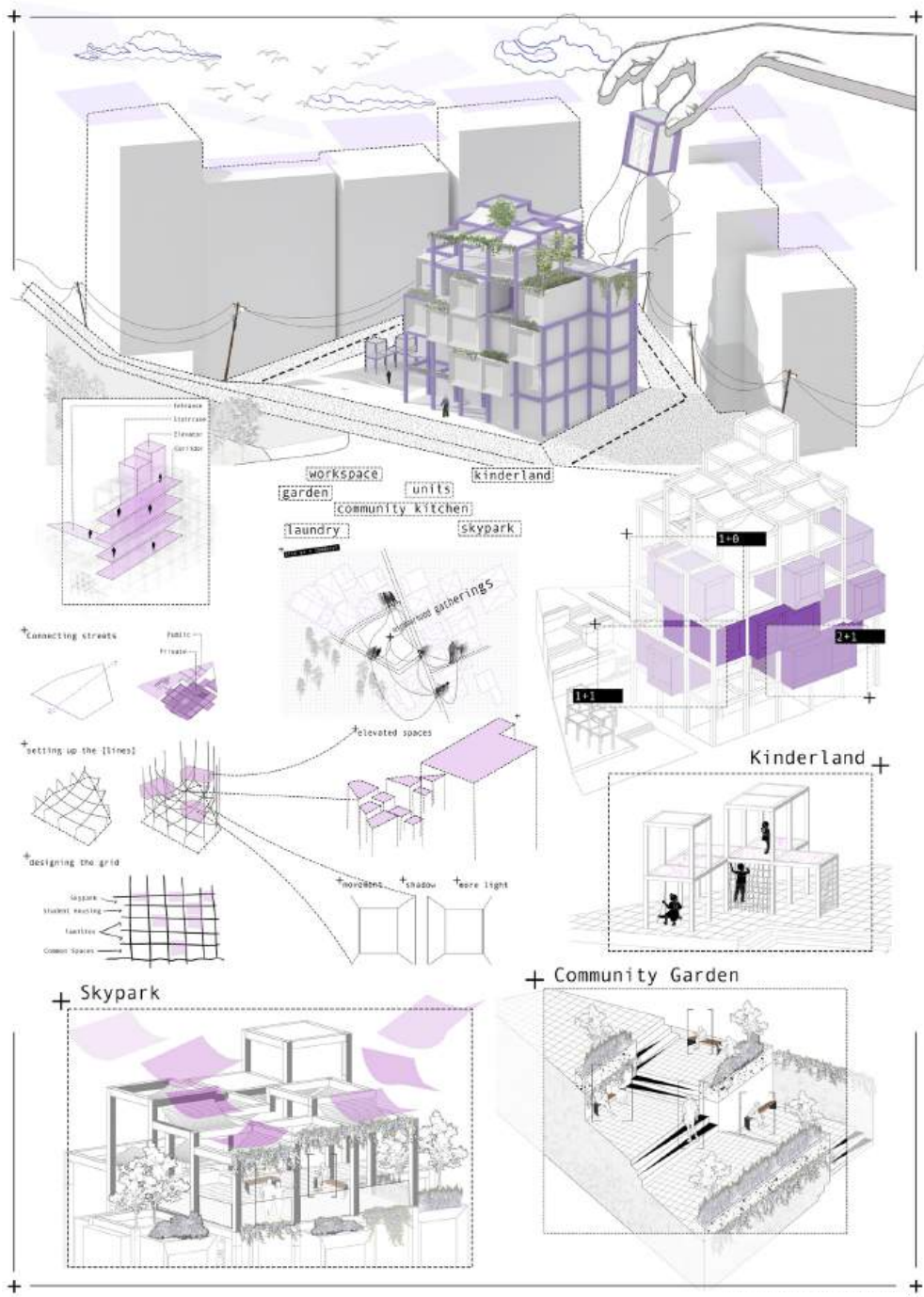
This project explores urban dynamics through sensory mapping, movement analysis, and spatial layering. By integrating public and private spaces, it fosters social interaction while ensuring privacy. The project focuses on creating a contrast between compact surroundings and the plot. By creating openings at different levels, a porosity effect is achieved. To avoid an overly compact appearance, the units are pushed and pulled, giving the facade a more dynamic and layered impression. Transparent materials, open-air circulation, and modular units create a dynamic environment shaped by neighborhood needs.





### **In Between [Lines] | Umid Akhundlu**

The project focuses on social housing in the Mahmut Şevket Paşa neighborhood, addressing the impacts of gentrification. The design centers on “lifelines,” physical lines and cables that symbolize the continuity of the neighborhood’s identity and the resilience of its community. The project aims to offer temporary units to displaced residents, acknowledging their struggles and supporting their role in shaping the neighborhood’s future.





# ARC 3001

Architectural Design Studio III



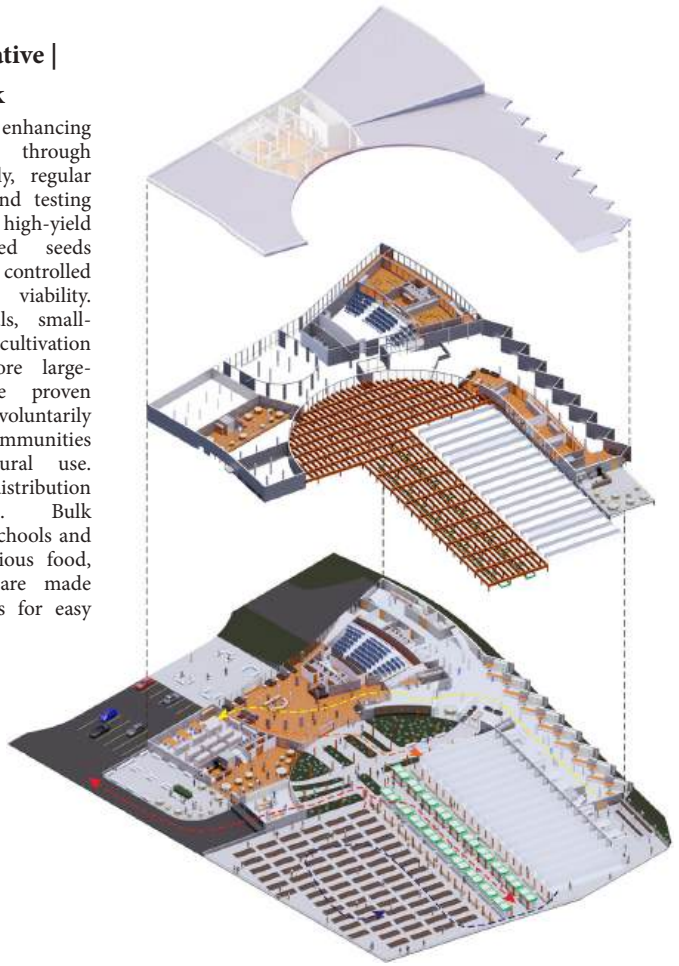
### **Design and Innovative Center | Suhaib Elrishi**

The project features a promenade with activities like seating, dining, and observation areas. Folded, repetitive elements create harmony, coverings, and semi-lit spaces. Using triangular and square modules, the topography forms a canyon-like landscape, enhancing usability and comfort.

## Urban Farming Initiative |

### Batuhan Uluç Uyanık

The program focuses on enhancing food quality and yield through seed modification. Initially, regular seeds undergo research and testing to develop improved, high-yield variants. These modified seeds are then cultivated in controlled environments to ensure viability. Following successful trials, small-scale greenhouse cultivation refines the process before large-scale distribution. Once proven effective, the seeds are voluntarily introduced to local communities for widespread agricultural use. The final stage involves distribution and commercialization. Bulk production supplies local schools and youth centers with nutritious food, while surplus products are made available in grocery stores for easy public access.







## The Culture and Traditional Research Center |

### Dalial Dzhbeili

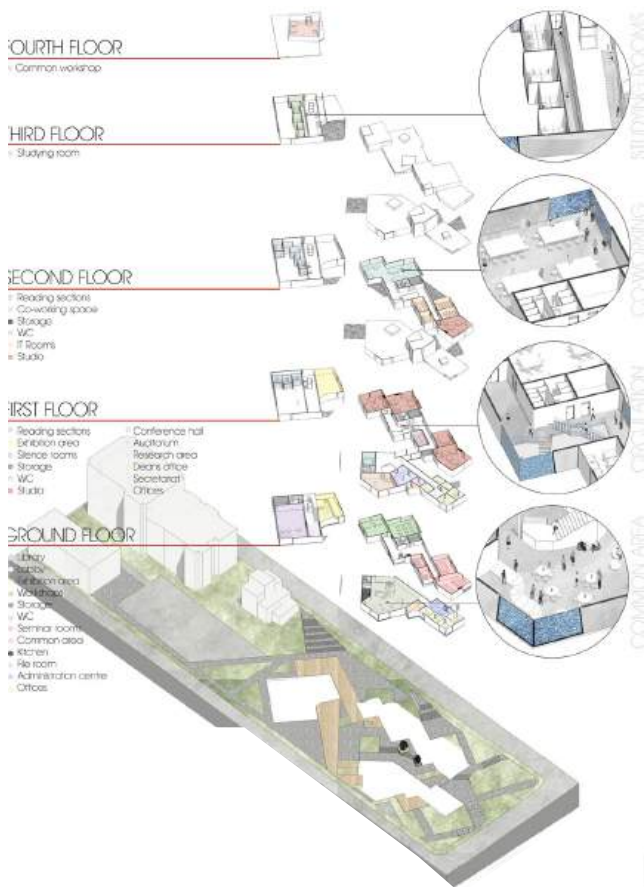
This center in Yenibosna is built to support cultural heritage and research. It includes laboratories for traditional arts, a library on cultural studies, and workshops for hands-on learning. The center aims to promote cultural exchange and education among researchers, students, and the community. It combines modern design with traditional aesthetics and improves accessibility. The project uses natural light and features brickwork on the ground floor to connect with its cultural background.





# ARC 3002

Architectural Design Studio IV



## Architectural School | Dali Dzhbeili

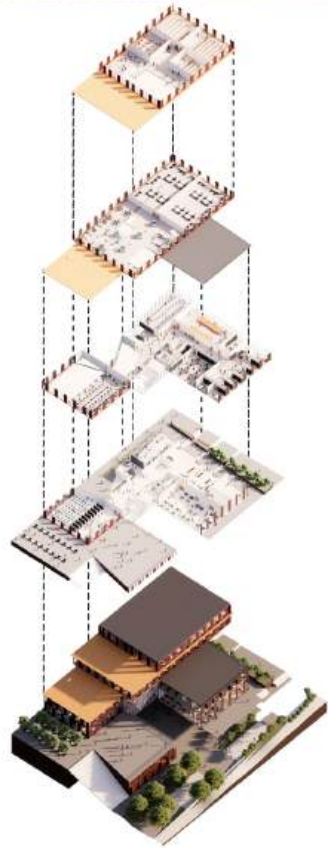
The architectural school in Bomonti, Istanbul, blends contemporary design with the area's industrial heritage, fostering creativity and collaboration. Open studios, flexible classrooms, and sustainable practices promote innovation and environmental awareness. Strategically positioned between contrasting neighborhoods, the school bridges tradition and modernity. A curtain wall facade enhances transparency, linking the interior with the city. This project revitalizes city, transforming it into a hub for architectural discourse and cultural exchange.

## School for Architecture in Bomonti |

### Tahir Emre Çilesiz

The project merges the altered topography with its program to create seamless transitions between market spaces. Defined as an abstract extension of its surroundings, the design balances social and private areas by moving from the whole to the part. Public engagement is prioritized, with active users—particularly educational groups—integrated into the building.

Key spaces foster interaction among students, locals, and market visitors, enhancing social connectivity. To maximize visibility and daylight utilization, the market facade remains open, while the school features a transparent design, reinforcing its connection with the surrounding environment.

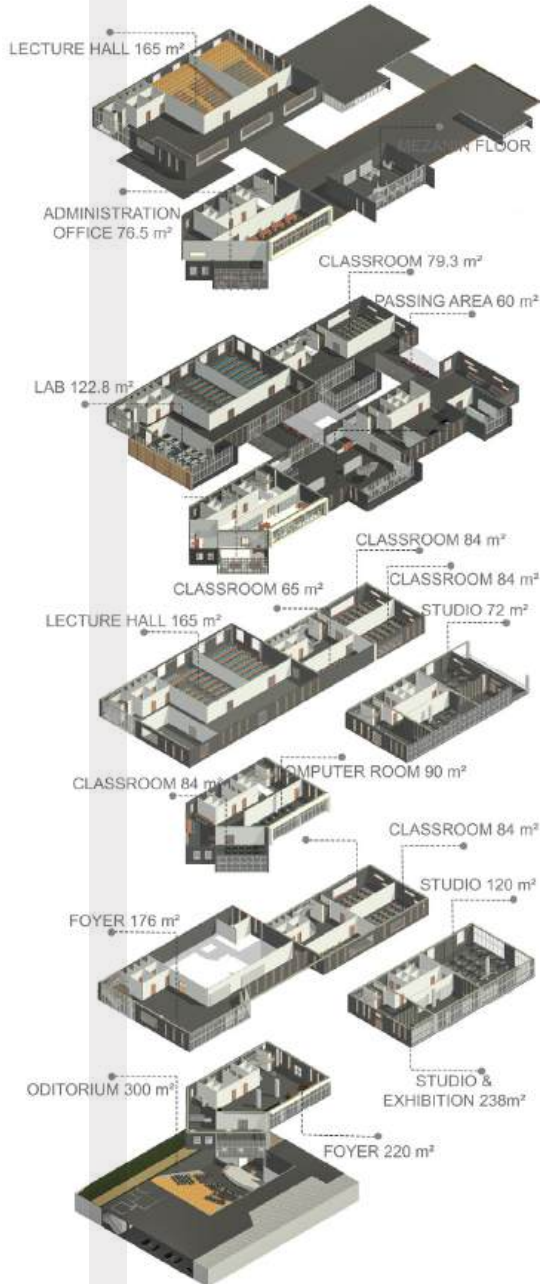




# Architectural School in Bomonti |

## Mehmet Emre Toyçi

This project establishes a strong connection with Bomonti Island by integrating the existing art workshops into the design of an architecture school. The selected site, facing the city center, was strategically chosen due to the impact of a 10-story parking structure that casts a shadow over Bomonti Island. The existing street axis, which crosses the site, was utilized to enhance spatial flow, seamlessly linking the school's entrance with the narrow access street of Bomonti Island. This approach not only strengthens the relationship with the urban fabric but also preserves and highlights the historical and cultural significance of the area.





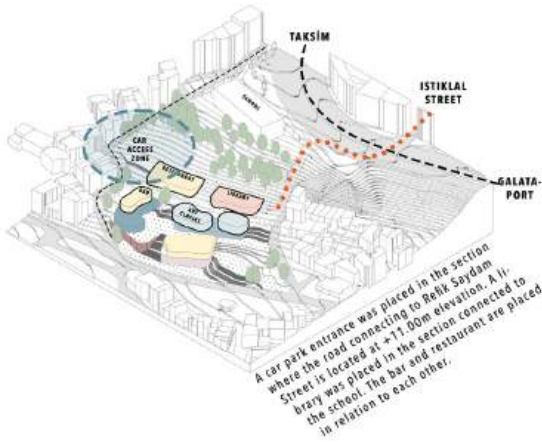
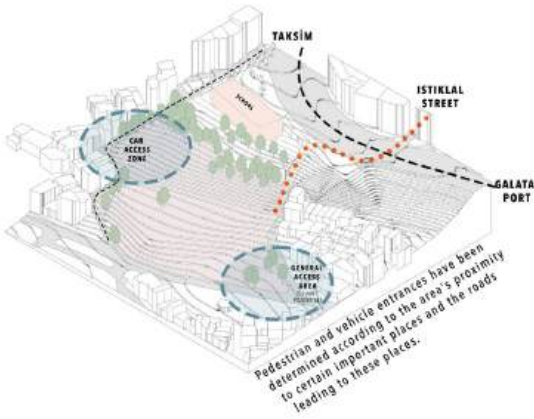


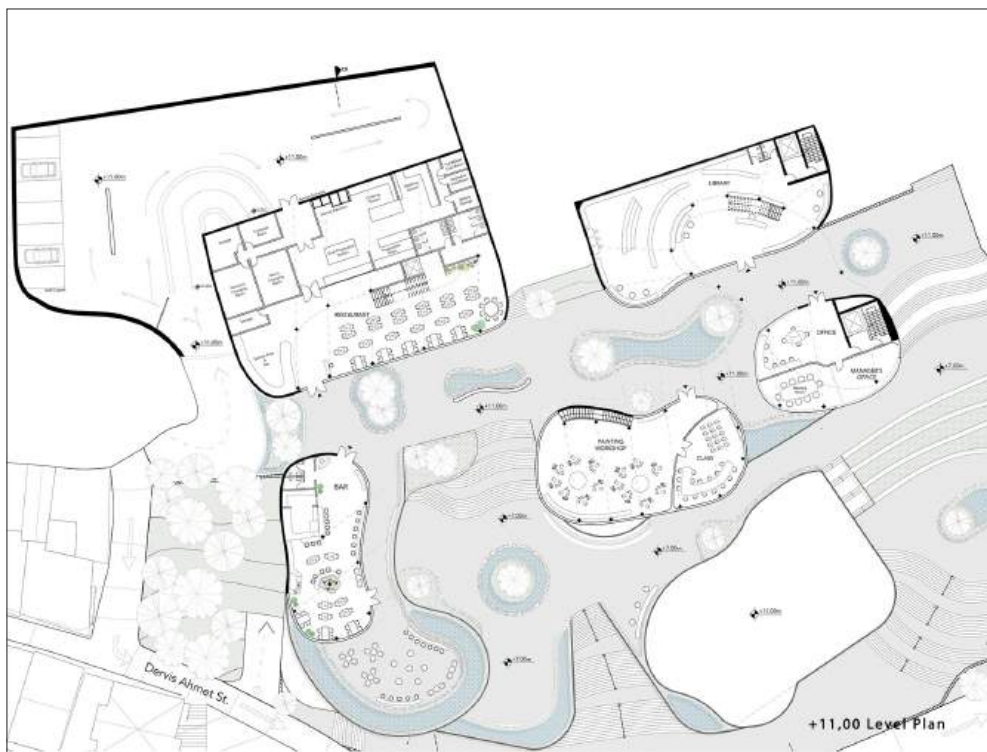
# ARC 4001

Architectural Design Studio V

## Architectural School in | Ceren Gökçe Özdemir

This project establishes a strong connection with Bomonti Island by integrating the existing art workshops school. The selected site, facing the city center, was strategically chosen due to the impact of a 10-story parking structure that casts a shadow over Bomonti Island. The existing street axis, which crosses the site, was utilized to enhance spatial flow, seamlessly linking the school's entrance with the narrow access street of Bomonti Island. This approach not only strengthens the relationship with the urban fabric but also preserves and highlights the historical and cultural significance of the area.





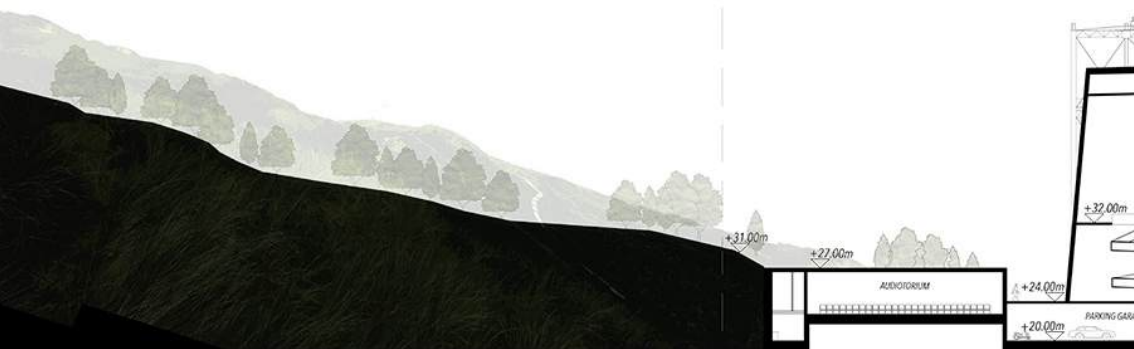
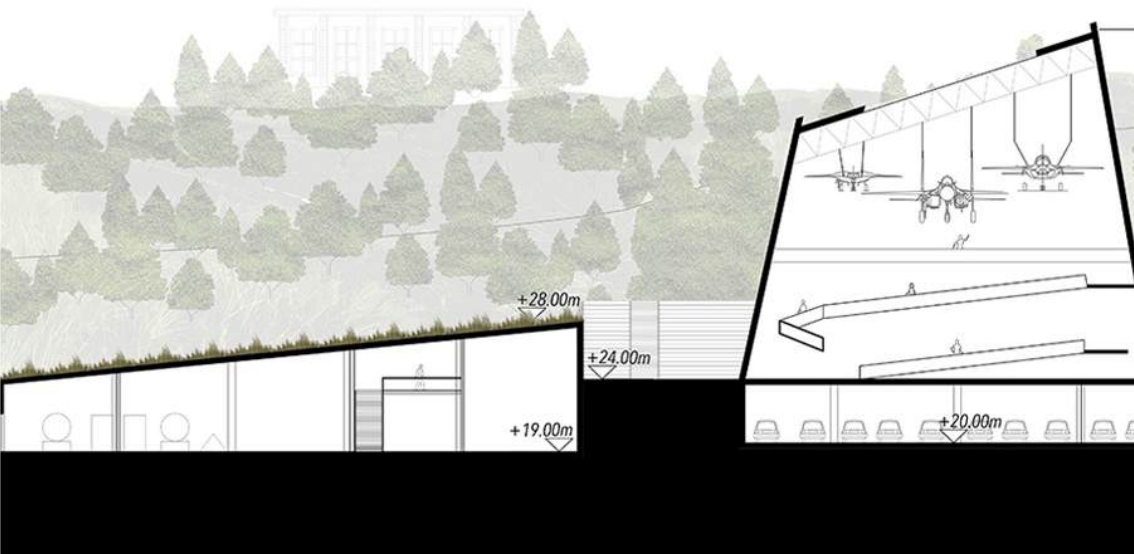


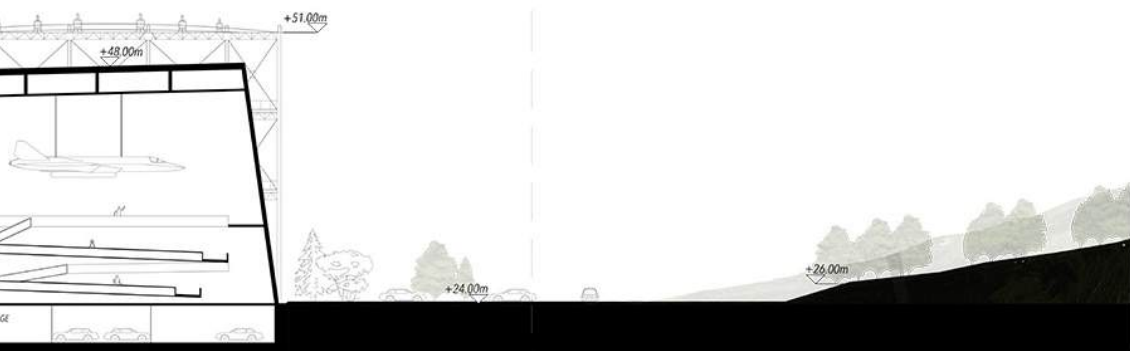
# ARC 4002

Graduation Project

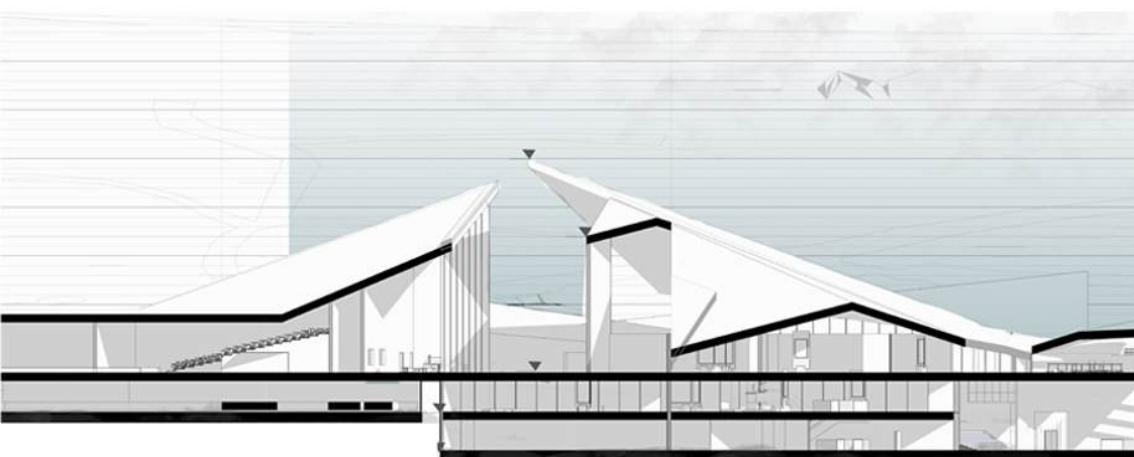
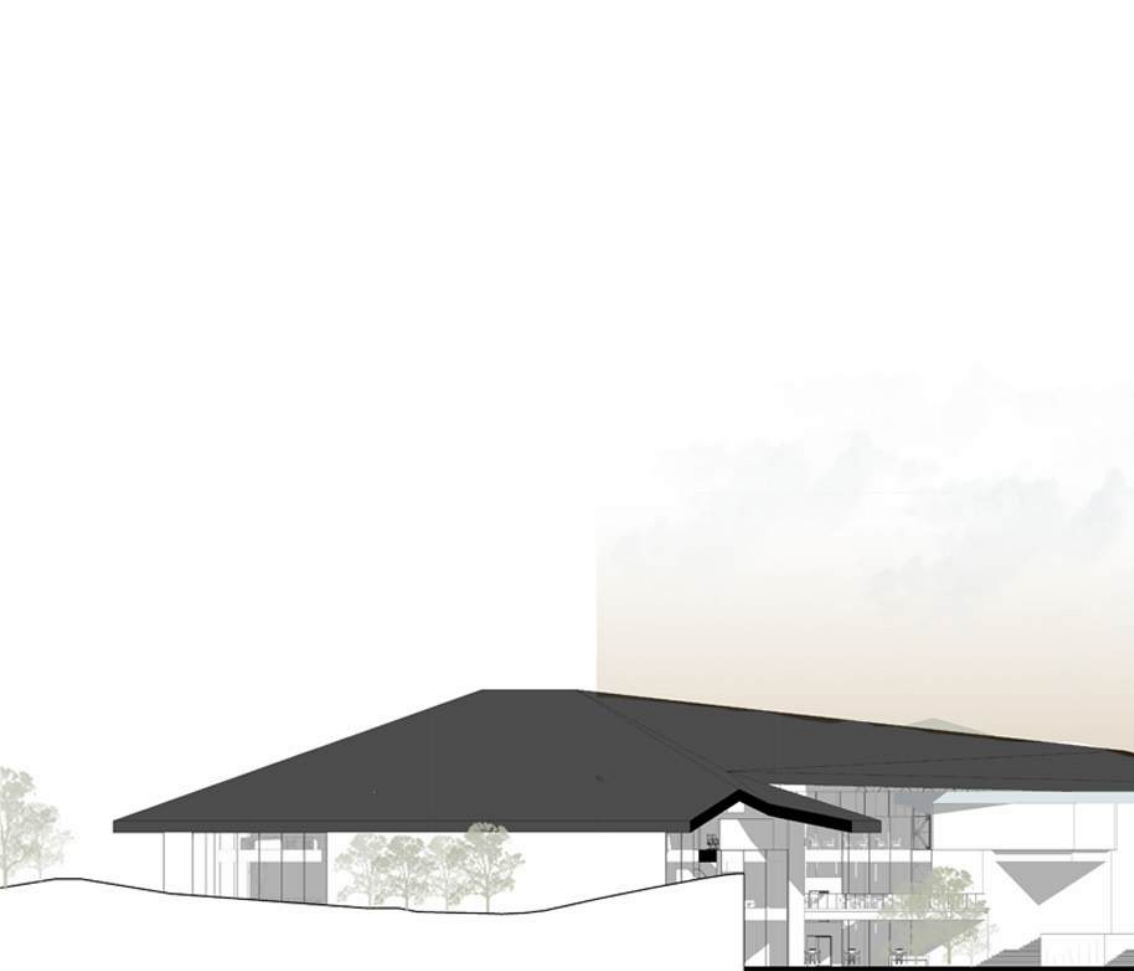
## Aviation and Space Museum | Serra Odabas

An aviation and space museum is designed beneath Maçka Park, ensuring the preservation of its natural continuity and integration with the topography. While maintaining public accessibility, it also serves as a cultural hub, addressing pedestrian flow disruptions caused by past constructions. Inspired by Maçka's history and its connection to Atatürk, the museum highlights aviation and space exploration, complementing nearby Military Museum exhibits. Adopting an anti-object approach, the structure is fully buried and covered with a walkable green roof, seamlessly blending into the park's landscape.



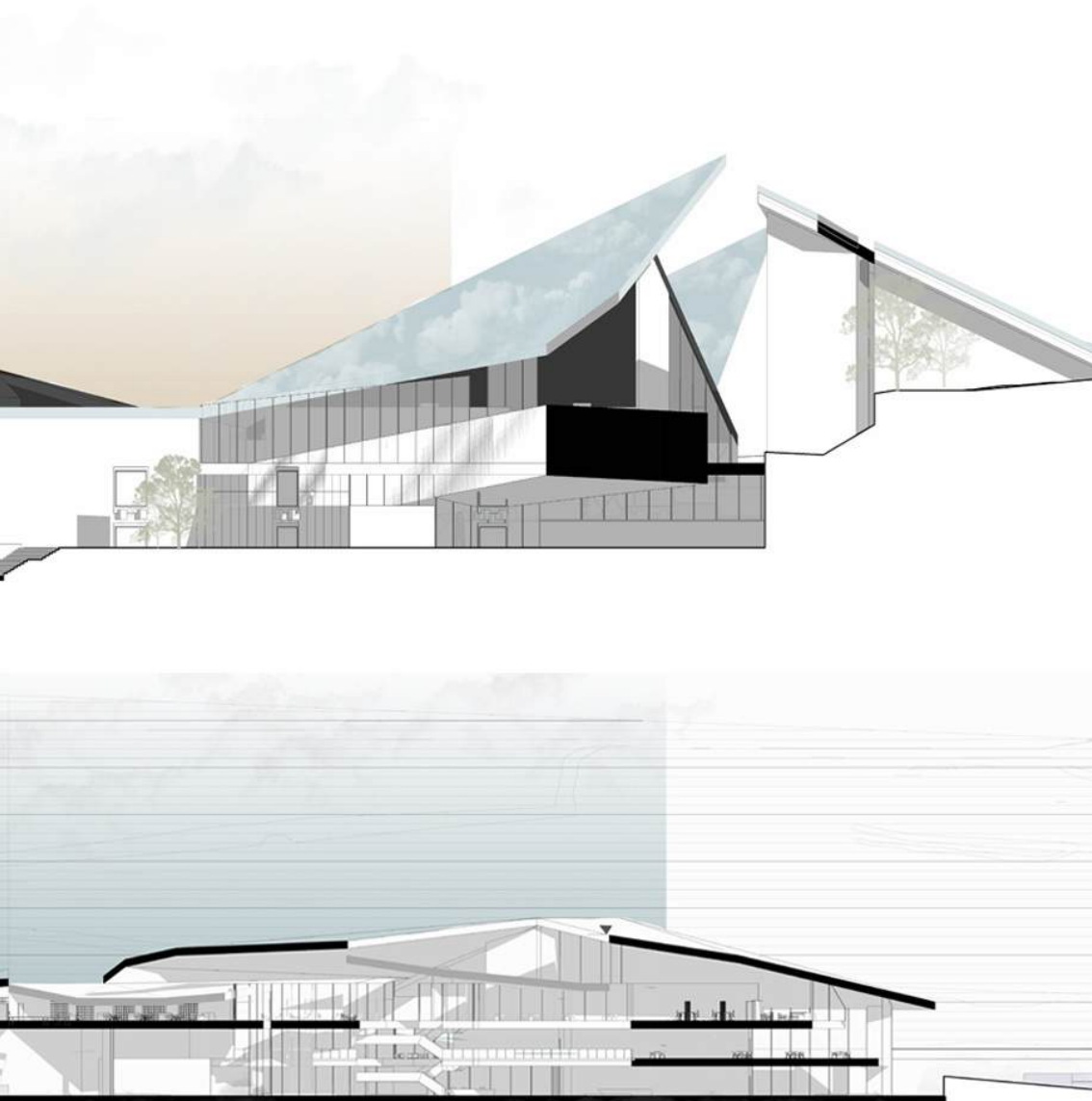






## Mačka Future Museum | Tala Mohammed

This center in Yenibosna is built to support cultural heritage and research. It includes laboratories for traditional arts, a library on cultural studies, and workshops for hands-on learning. The center aims to promote cultural exchange and education among researchers, students, and the community. It combines modern design with traditional aesthetics and improves accessibility. The project uses natural light and features brickwork on the ground floor to connect with its cultural background.



## Fragmenta | Kawther Al-Jumaili

As the deconstruction progresses towards the seaside, the design integrates with the natural landscape, blurring the boundaries between the built environment and the natural surroundings. The exterior of FRAGMENTA is characterized by a Voronoi pattern that gradually deconstructs as it approaches the seaside. This deconstruction mimics natural erosion and fragmentation processes, creating a visually dynamic and organic transition from the more structured landward side to the more open and fragmented seaward side.

